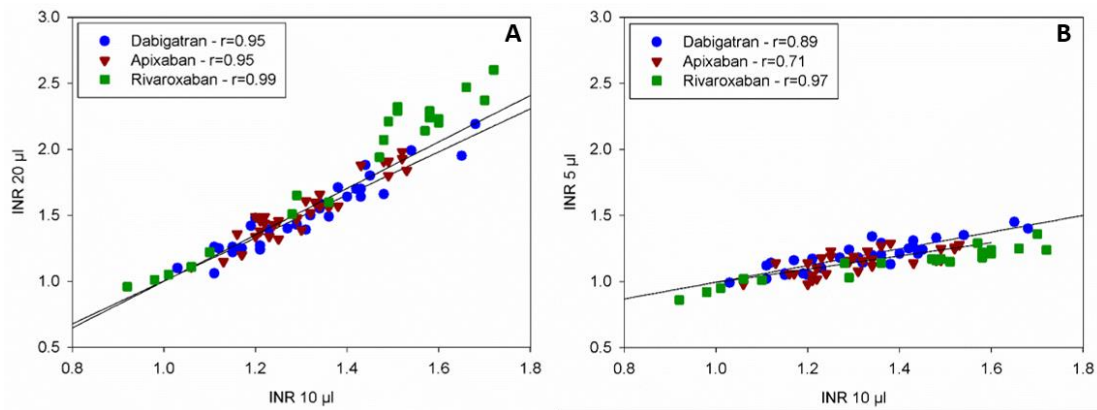
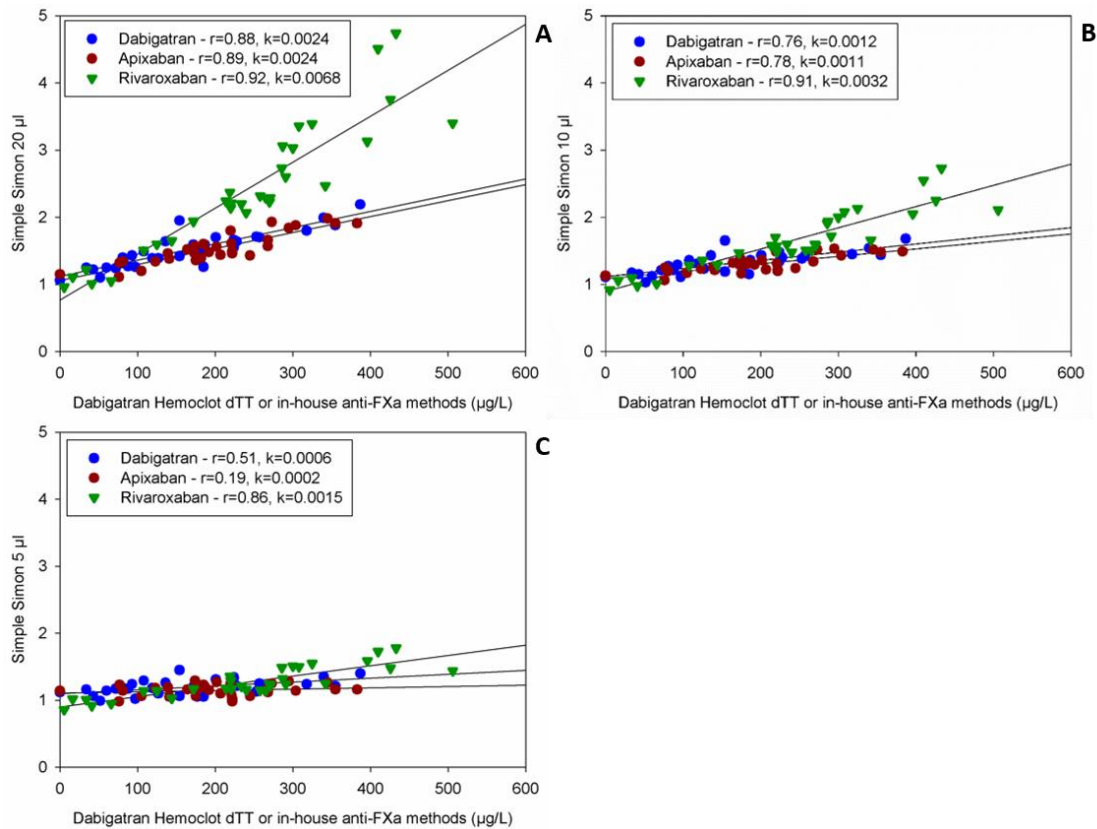


Supplemental section



Supplemental Figure 1. The alignment between the results with 20 µL of sample and 10 µL of sample (Figure S-1A) and that of 5 µL of sample and 10 µL of sample (Figure S1-B).



Supplemental Figure 2. The dose-response characteristics of the PT-method method variants run at room temperature on Simple Simon™ for 20 µL method (A), 10 µL method (B) and 5 µL method (C) in comparison with Hemoclot dTT®, or in-house anti-FXa methods, measured on plasmas from patients on treatment with respective NOAC. $n=30$. The zero-point is healthy donors without treatment